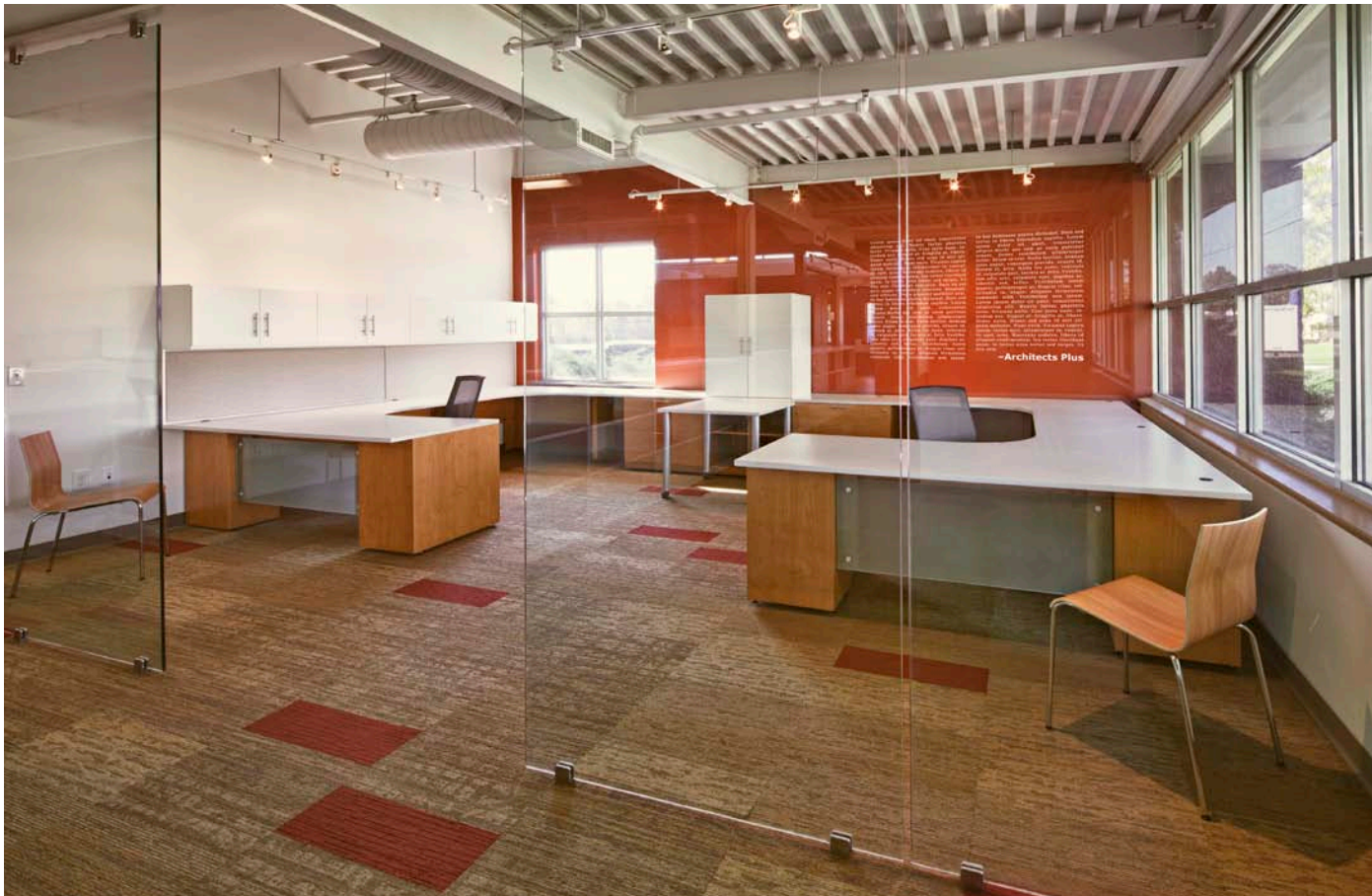




Three H On Location

Architects Plus - Cincinnati, Ohio

For further information please visit us at www.three-h.com or contact us at 1.800.767.5374



Architects Plus

A Plan for the Future

OBJECTIVE

This Cincinnati-based architectural firm was expanding and faced an opportunity to move into a larger bright space with a long wall of nicely structured and attractive windows. A perfect time to take advantage of an open plan system for its employees while creating a transparent and highly functional creative arrangement for the partners.

Architects Plus chose Three H over several leading brand manufacturers for its ability to not only provide MultiStations OS open plan furniture that suited the space but also private office solutions customized to the partners rooms. A uniquely created "surround-office" provides two of the partners with a perfectly fitted, wall-to-wall wrap-around desk. Plenty of individual space with the ability to switch to collaboration in an instant.

And with a conference room arrangement as part of the mix, Three H provided a total office solution.

SCOPE

MultiStations OS
Function Casesgoods
Conference Table

FINISHES & DETAILS

Honey Maple
White

Project Dealer:

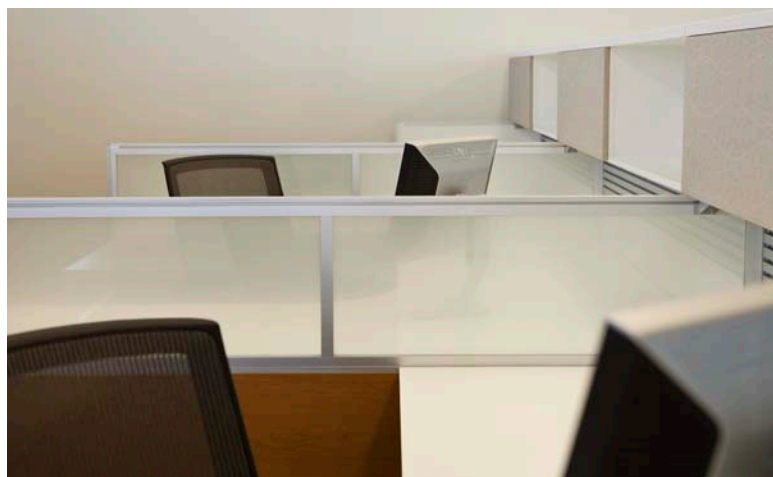
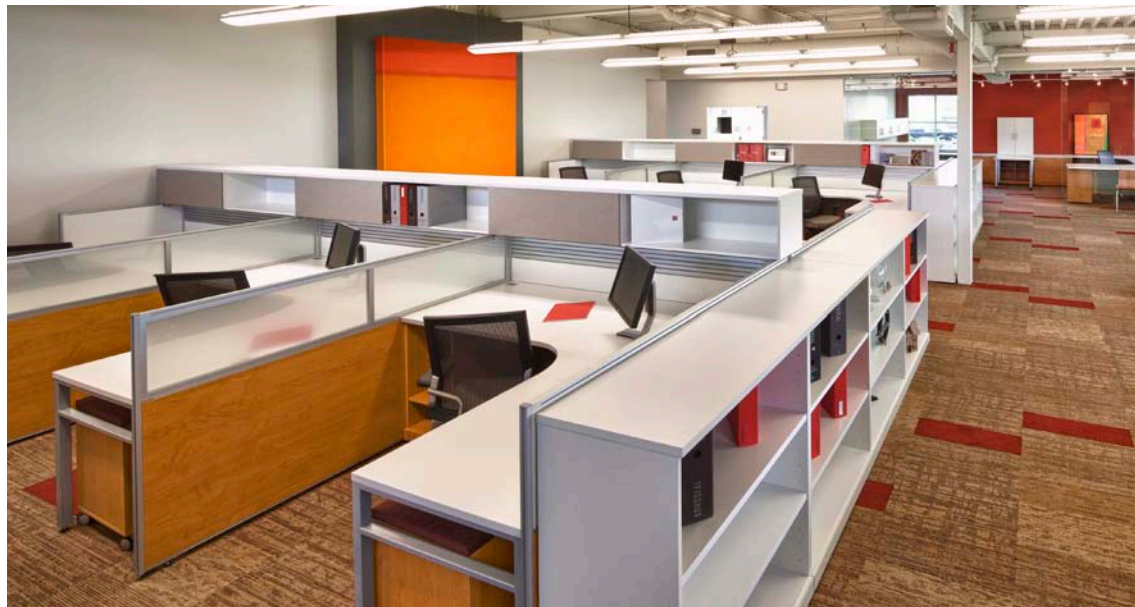
Office Furniture Source
www.officefurnituresource.com



Three H Furniture
Systems Limited
156462 Clover Valley Rd.
New Liskeard, ON
Canada P0J 1P0

T. 1.800.767.5374
F. 1.888.484.5786

customer.service@three-h.com
www.three-h.com



"We achieved the best overall outcome: A clean, modern aesthetic; highly functional furniture; creative customized private offices, all at a highly competitive price."

Nora Wiley LEED AP
VP - Interior Studios
Architects Plus



ArchitectsPlus

"We approached AP with several options and Three H won out on all criteria. Three H was even able to offer peds without drawer fronts for the unique storage needs of architects. And the overall product durability is a definite added bonus."

Lisa Proctor-Viel
Office Furniture Source
Cincinnati